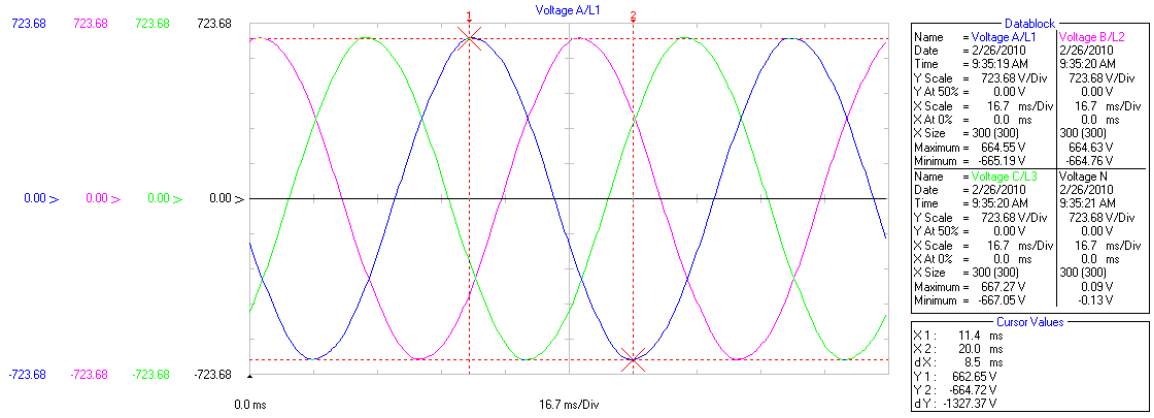
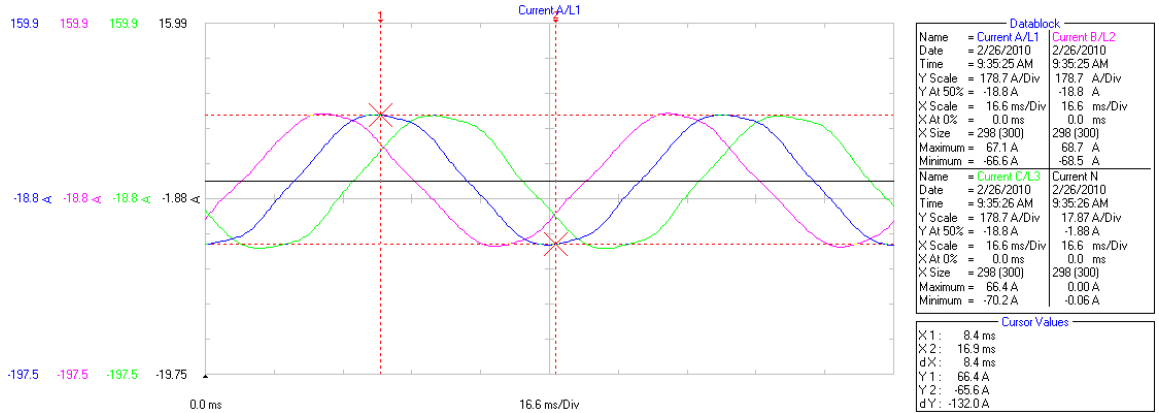


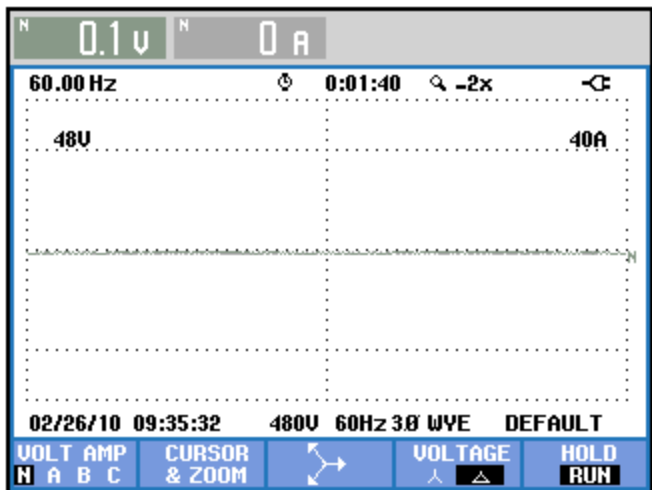
TEMPLATE: BIG ROUND SAW Y MODE; VOLTAGES



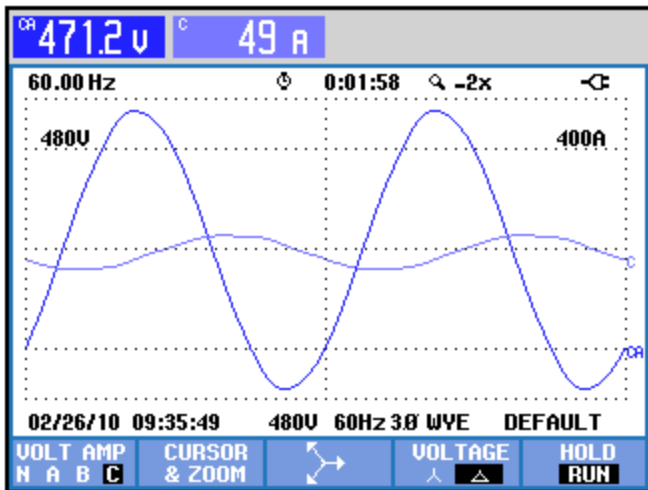
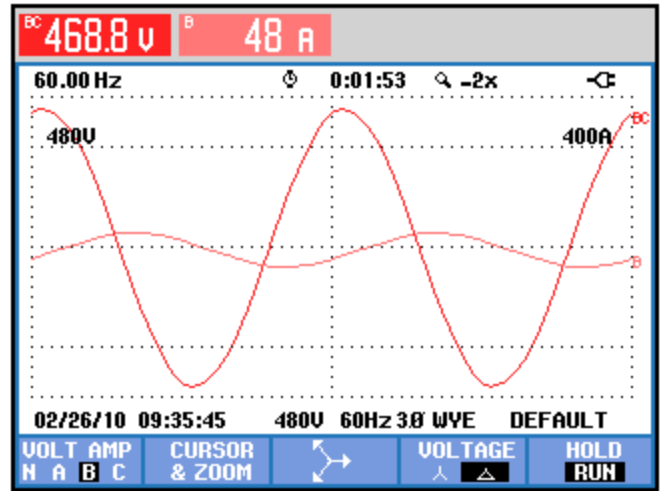
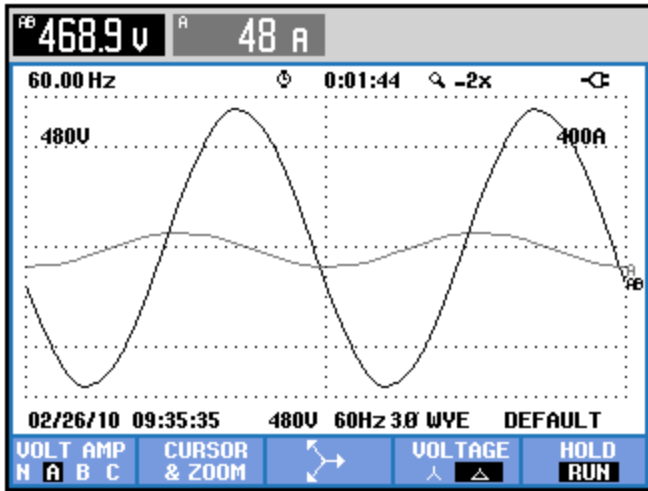
CURRENTS:



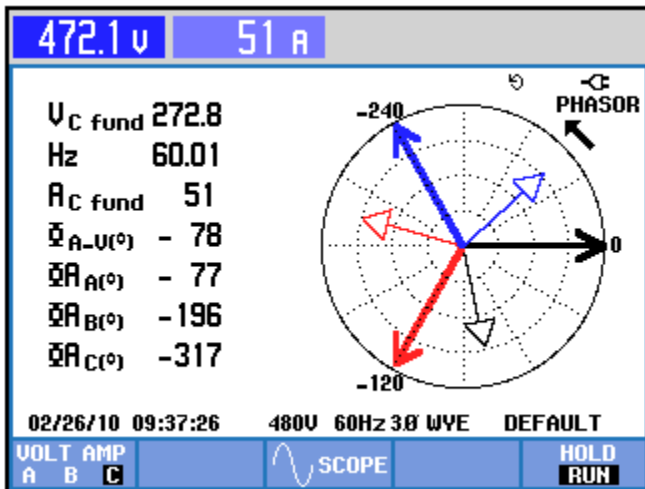
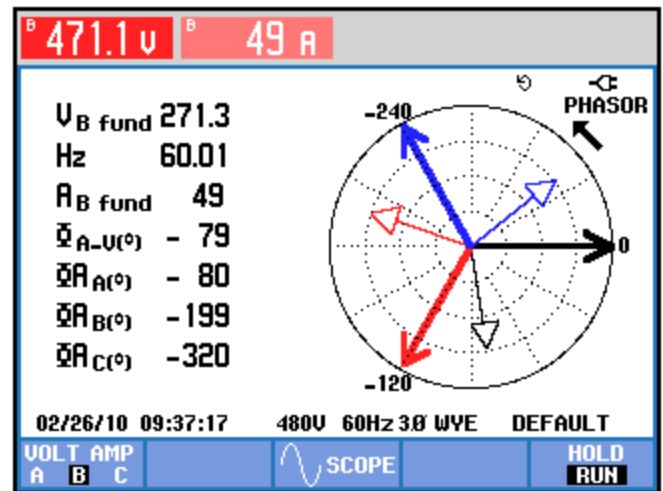
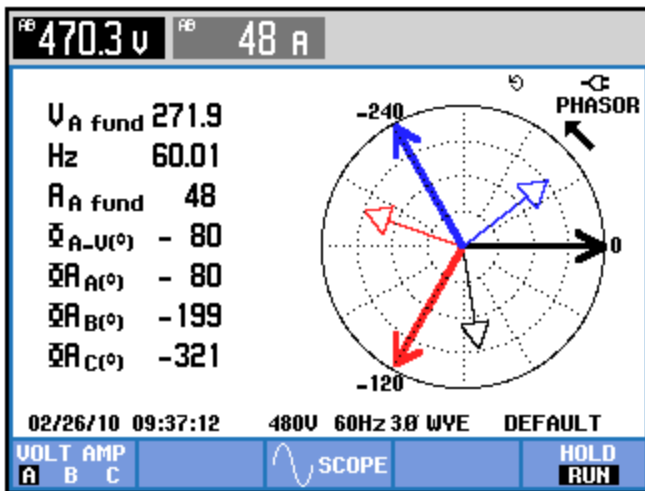
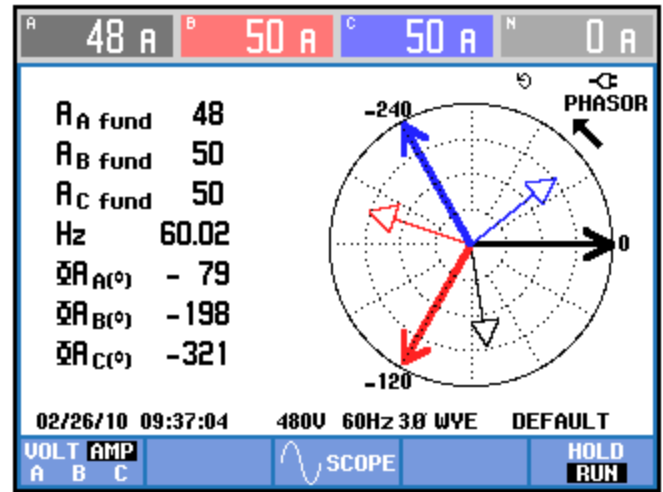
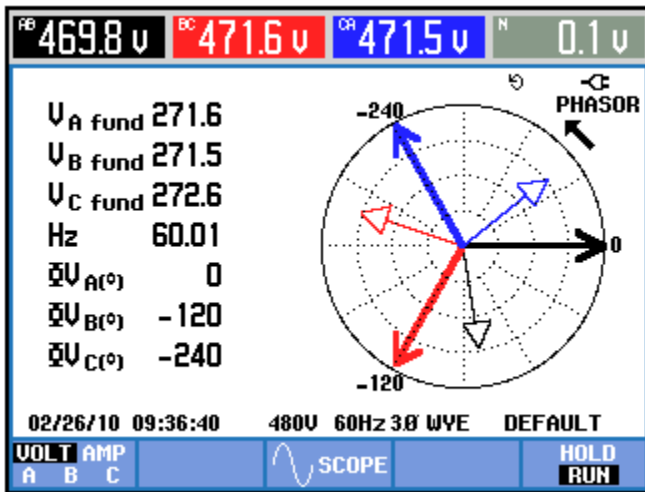
NEUTRAL:



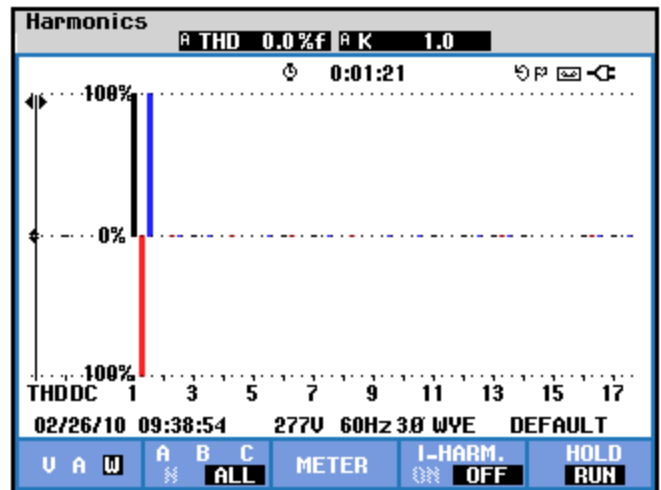
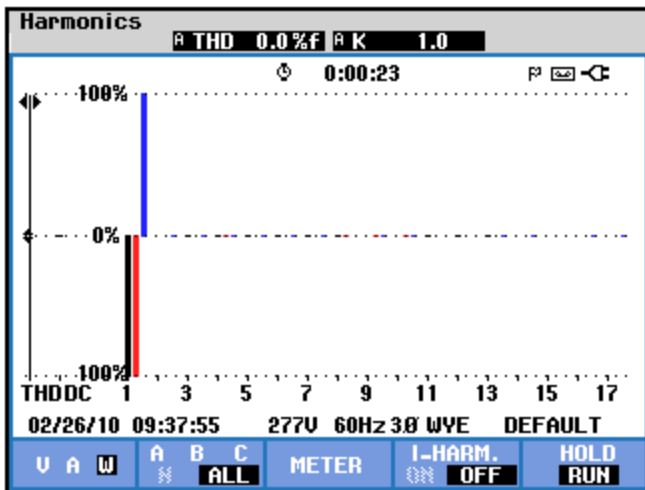
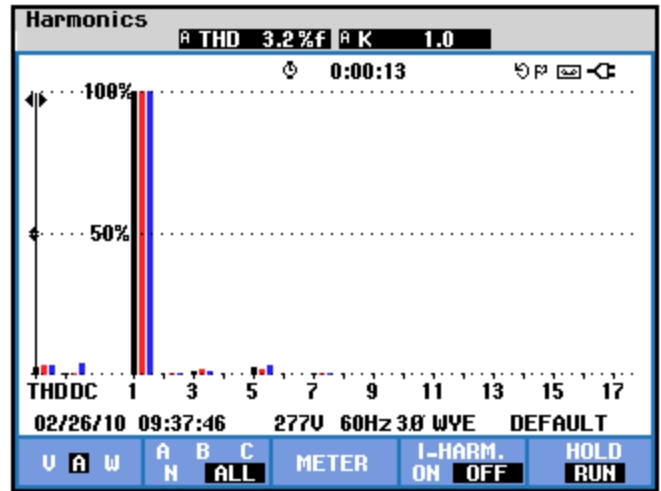
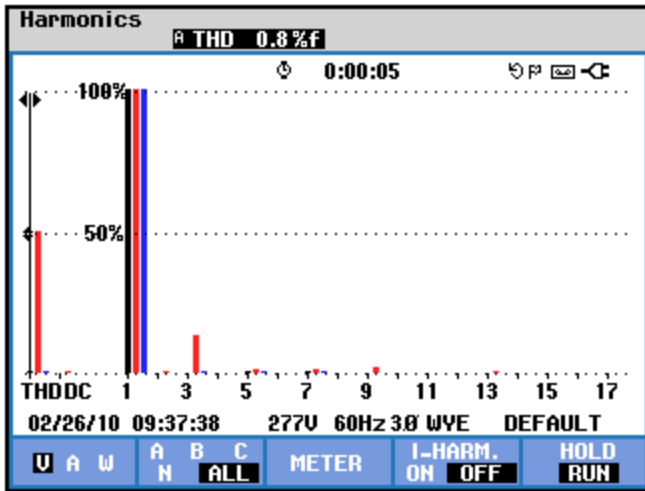
PHASE OVERLAYS:



VECTOR:



HARMONICS:



HARMONICS TABLE 0:01:39

Volt	A	B	C	N
THD%f	0.8	49.0	1.0	35.6
H3%f	0.2	48.2	0.4	12.8
H5%f	0.6	3.7	0.8	11.7
H7%f	0.4	3.1	0.5	11.1
Amp	A	B	C	N
H3%f	1.1	2.2	1.4	55.4
H5%f	2.6	2.2	3.1	51.6
H7%f	0.7	0.7	0.7	48.5

02/26/10 09:39:11 277V 60Hz 3Ø WYE DEFAULT

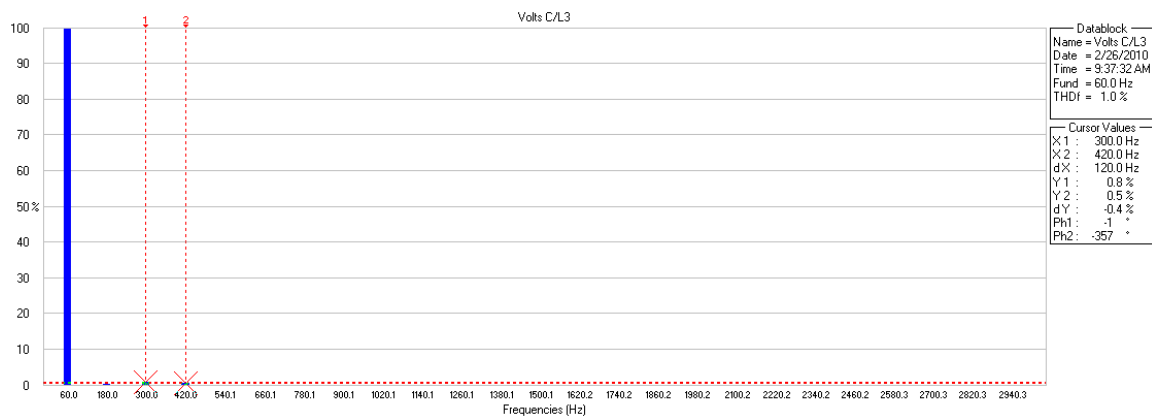
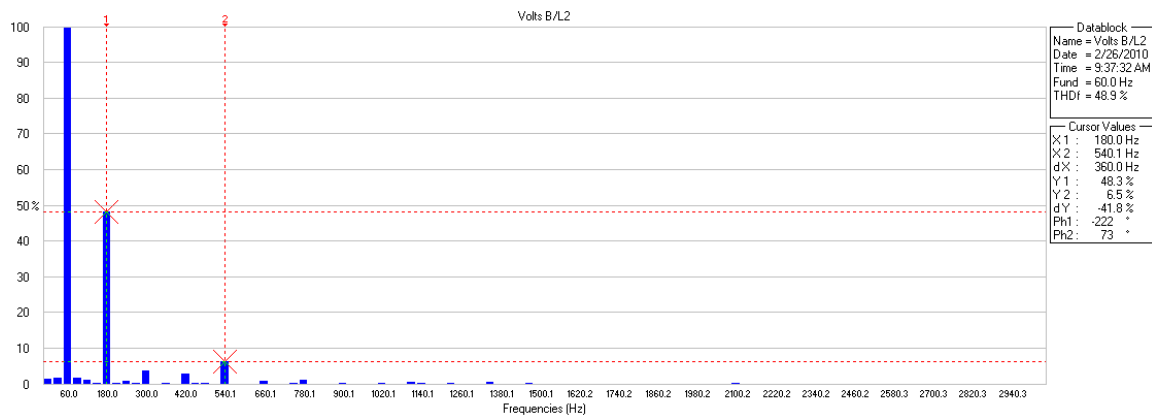
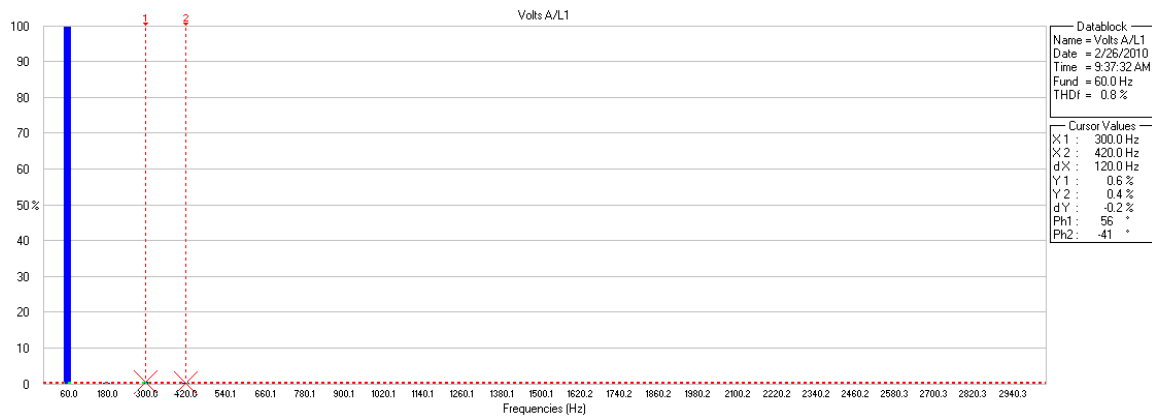
U A W HARMONIC HOLD
U&A GRAPH TREND RUN

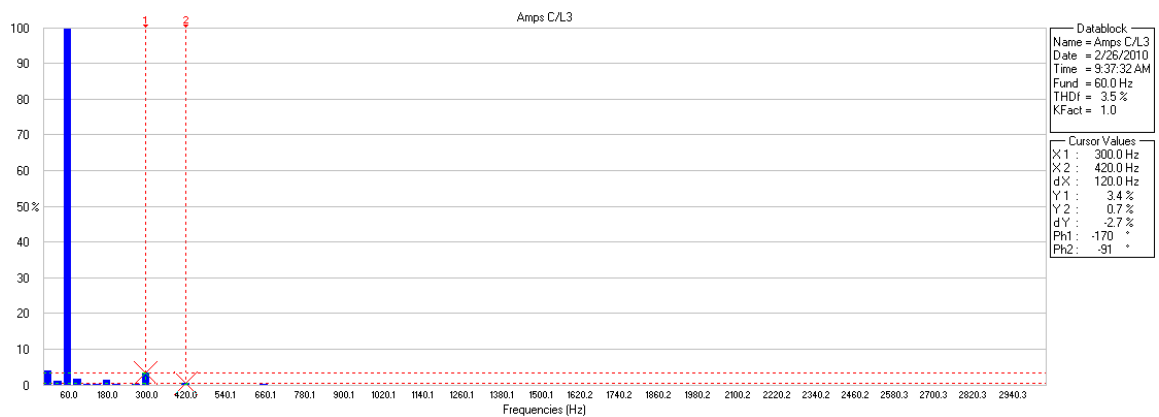
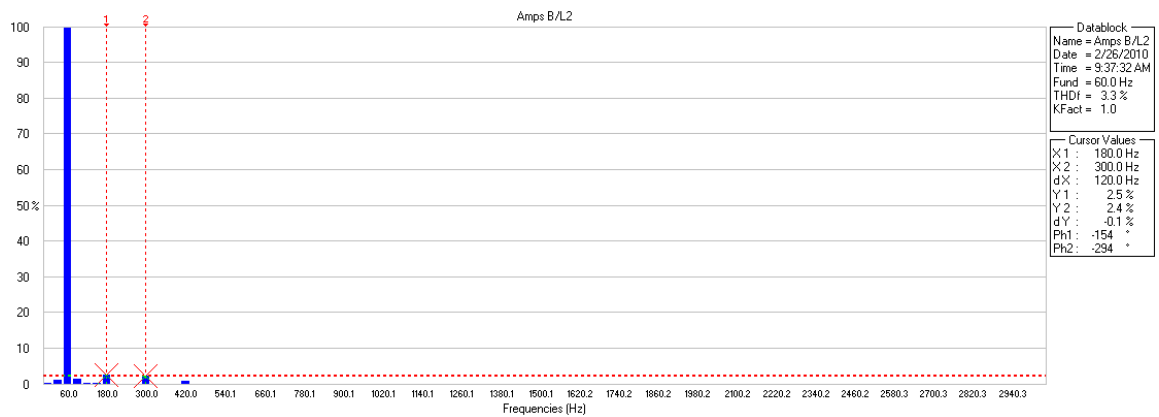
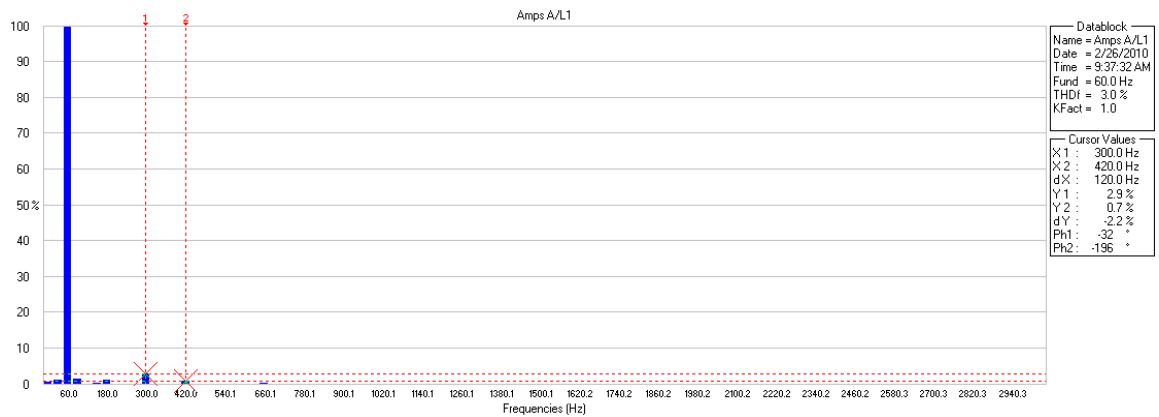
HARMONICS TABLE 0:01:39

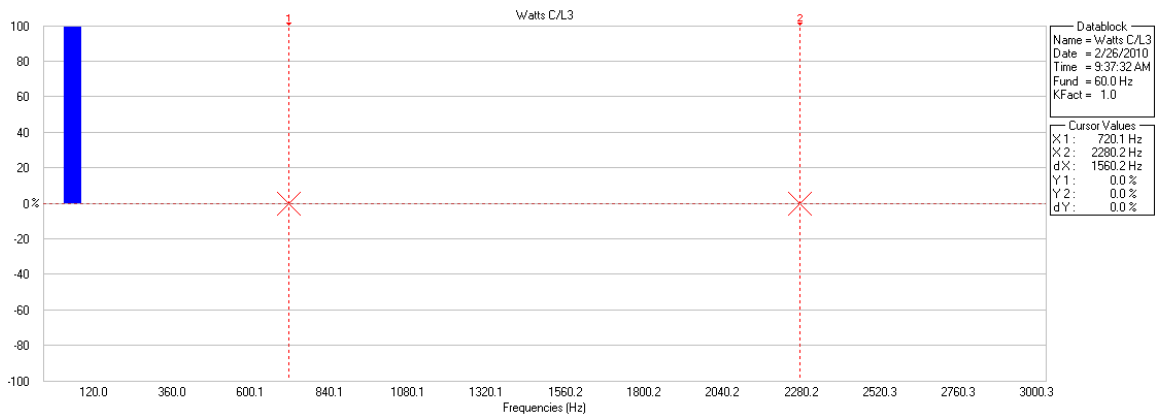
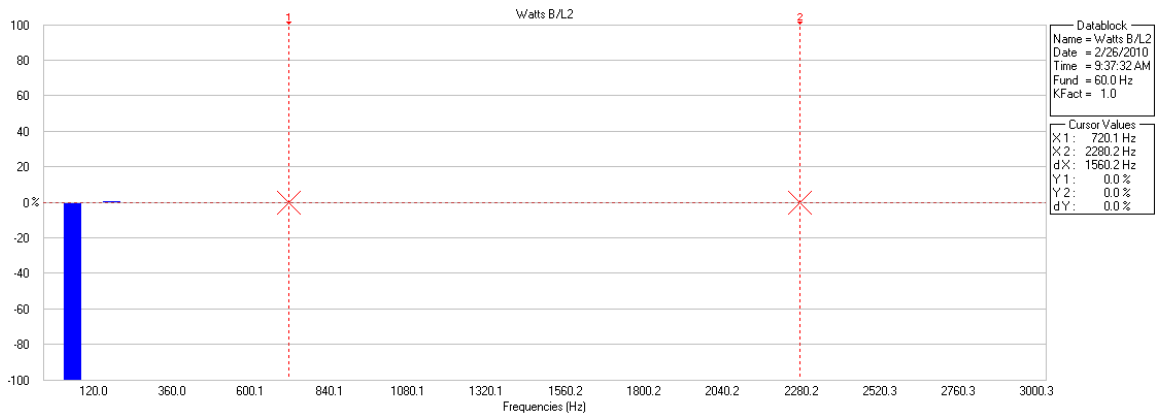
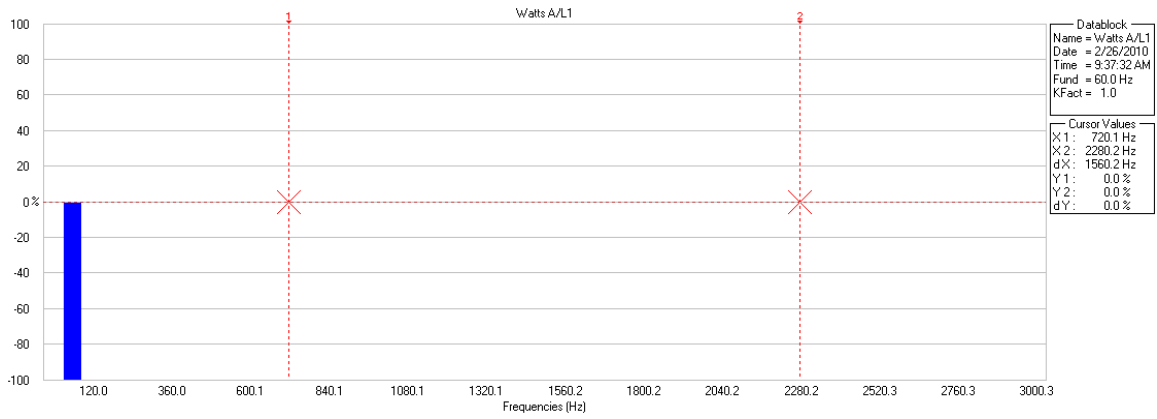
Volt	A	B	C	N
THD%f	0.8	49.0	1.0	35.6
H3%f	0.2	48.2	0.4	12.8
H5%f	0.6	3.7	0.8	11.7
H7%f	0.4	3.1	0.5	11.1
Amp	A	B	C	N
H3%f	1.1	2.2	1.4	55.4
H5%f	2.6	2.2	3.1	51.6
H7%f	0.7	0.7	0.7	48.5

02/26/10 09:39:11 277V 60Hz 3Ø WYE DEFAULT

U A W HARMONIC HOLD
U&A GRAPH TREND RUN



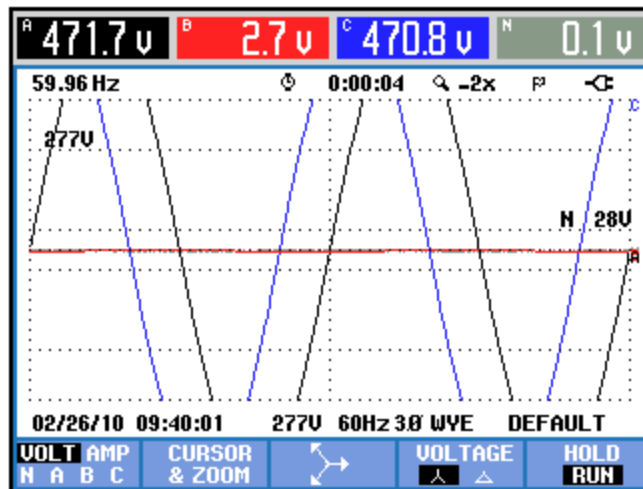




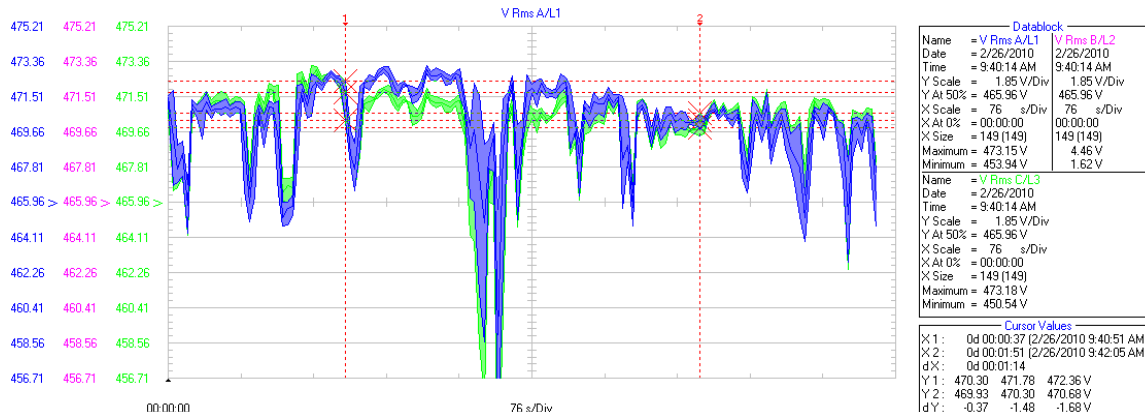
TRENDS:

Power & Energy				
FULL 0:00:09				
	A	B	C	Total
kW	-7.686	-0.060	14.71	6.963
kVA	22.59	0.094	23.43	46.12
kVAR	21.24	0.073	18.24	39.41
PF	-0.34	---	0.63	0.15
DPF	-0.34	---	0.63	0.15
Arms	48	49	50	
<hr/>				
	A	B	C	
Vrms	470.9	1.9	471.4	
02/26/10 09:40:23 277V 60Hz 3Ø WYE DEFAULT				
VOLTAGE	ENERGY		TREND	HOLD RUN

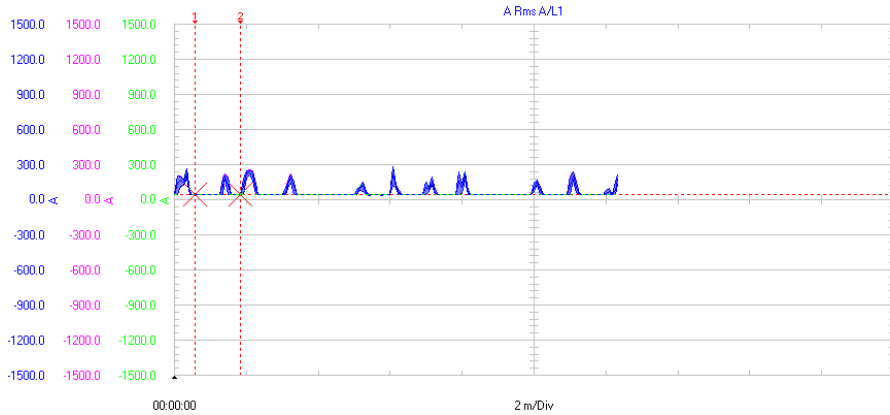
Power & Energy				
FULL 0:00:17				
	A	B	C	Total
kW	54.04	-0.538	98.87	152.4
kVA	99.00	0.627	99.16	198.8
kVAR	82.94	0.322	7.648	74.97
PF	0.55	-0.86	1.00	0.77
DPF	0.55	-1.00	1.00	0.77
Arms	213	217	213	
<hr/>				
	A	B	C	
Vrms	465.5	2.9	466.4	
02/26/10 09:40:30 277V 60Hz 3Ø WYE DEFAULT				
VOLTAGE	ENERGY		TREND	HOLD RUN



VOLTAGES:

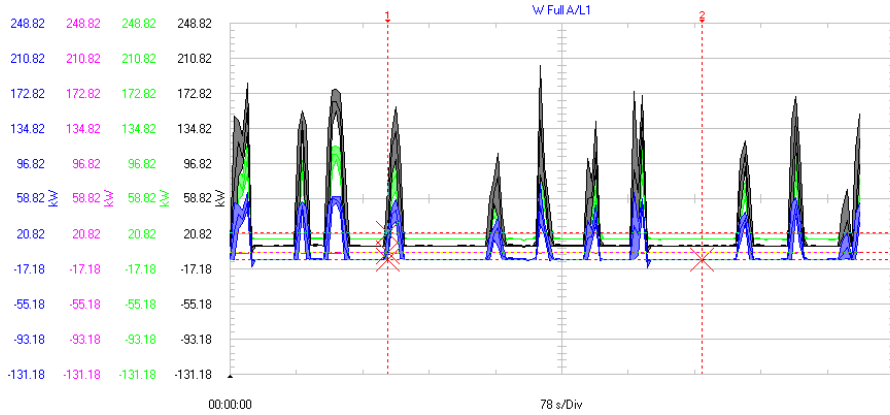


CURRENT



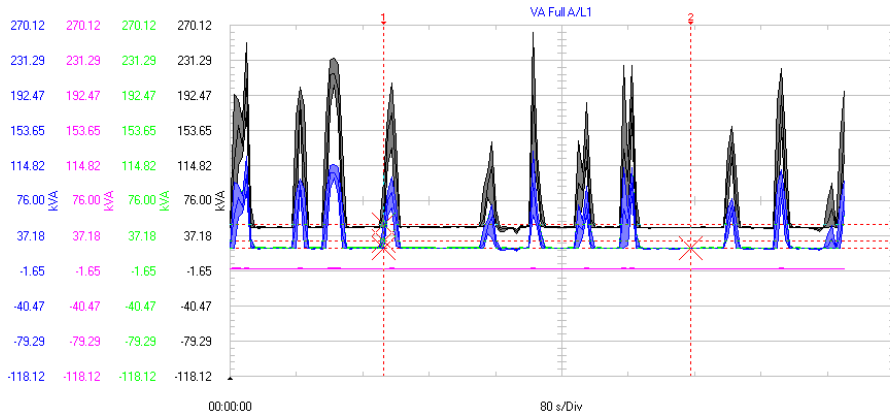
Datablock	
Name = A Rms A/L1	A Rms B/L2
Date = 2/26/2010	2/26/2010
Time = 9:40:14 AM	9:40:14 AM
Y Scale = 300 A/Div	300 A/Div
Y At 50% = 0.0 A	0.0 A
X Scale = 2 m/Div	2 m/Div
X At 0% = 00:00:00	00:00:00
X Size = 149 (149)	149 (149)
Maximum = 282.8 A	285.9 A
Minimum = 43.1 A	42.5 A
Cursor Values	
X1: 0d 00:00:07 (2/26/2010 9:40:21 AM)	
X2: 0d 00:00:22 (2/26/2010 9:40:36 AM)	
dX: 0d 00:00:15	
Y1: 46.9 47.8 48.2 A	
Y2: 47.2 47.6 48.0 A	
dY: 0.3 -0.2 -0.2 A	

WATTS:



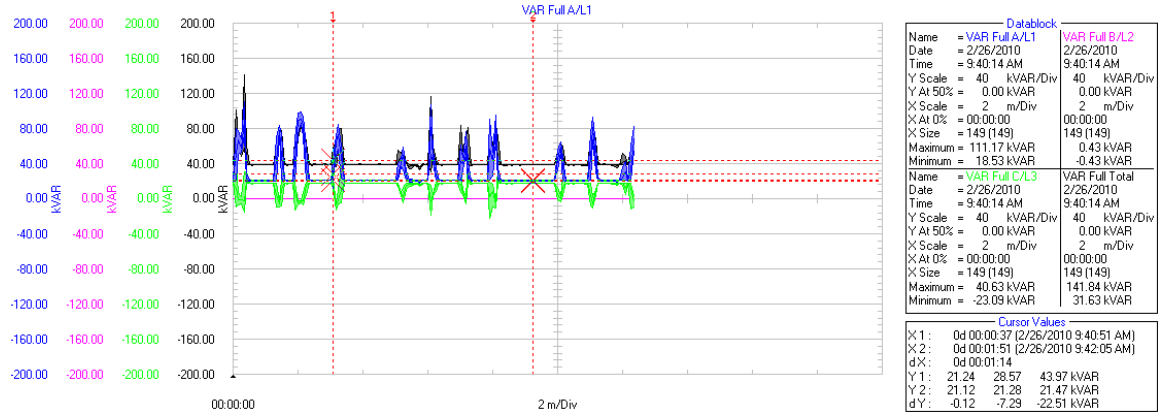
Datablock	
Name = W Full A/L1	W Full B/L2
Date = 2/26/2010	2/26/2010
Time = 9:40:14 AM	9:40:14 AM
Y Scale = 38 kW/Div	38 kW/Div
Y At 50% = 58.82 kW	58.82 kW
X Scale = 78 s/Div	78 s/Div
X At 0% = 00:00:00	00:00:00
X Size = 149 (149)	149 (149)
Maximum = 74.80 kW	-0.01 kW
Minimum = -16.53 kW	-1.08 kW
Cursor Values	
X1: 0d 00:00:37 (2/26/2010 9:40:51 AM)	
X2: 0d 00:01:51 (2/26/2010 9:42:05 AM)	
dX: 0d 00:01:14	
Y1: -7.92 0.31 21.23 kW	
Y2: -7.85 -7.56 -7.37 kW	
dY: 0.07 -7.87 -28.60 kW	

VA WATTS:

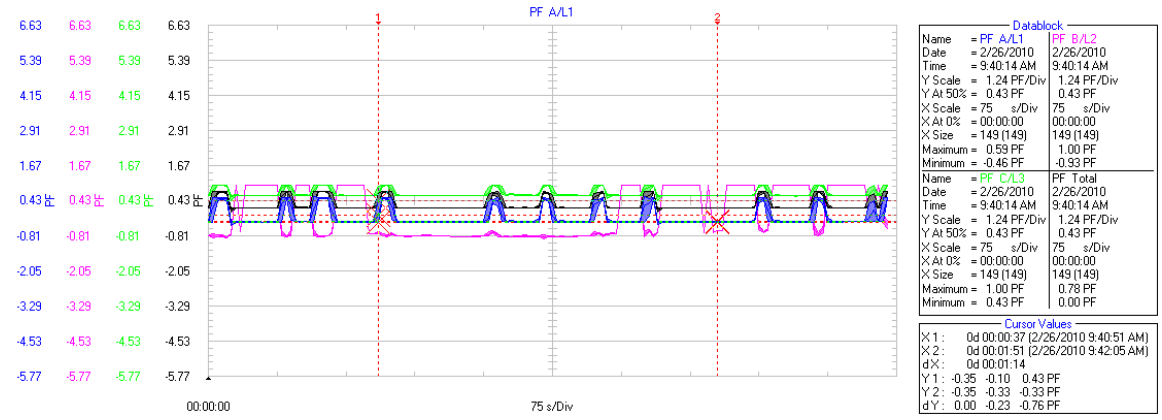


Datablock	
Name = VA Full A/L1	VA Full B/L2
Date = 2/26/2010	2/26/2010
Time = 9:40:14 AM	9:40:14 AM
Y Scale = 38.82 kVA/Div	38.82 kVA/Div
Y At 50% = 76.00 kVA	76.00 kVA
X Scale = 80 s/Div	80 s/Div
X At 0% = 00:00:00	00:00:00
X Size = 149 (149)	149 (149)
Maximum = 131.53 kVA	1.16 kVA
Minimum = 19.63 kVA	0.08 kVA
Cursor Values	
X1: 0d 00:00:37 (2/26/2010 9:40:51 AM)	
X2: 0d 00:01:51 (2/26/2010 9:42:05 AM)	
dX: 0d 00:01:14	
Y1: 22.67 30.40 48.83 kVA	
Y2: 22.45 22.59 22.72 kVA	
dY: -0.21 -7.81 -26.11 kVA	

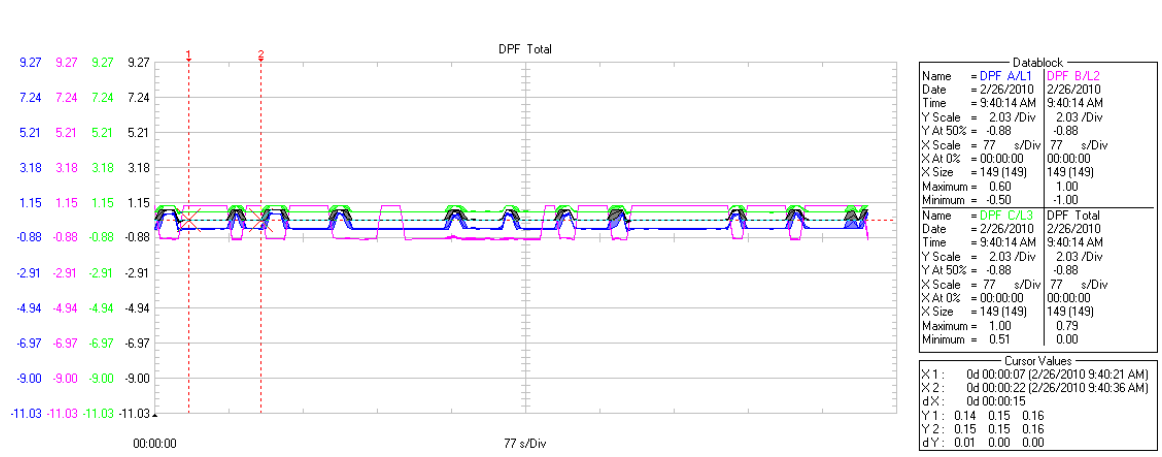
VAR:



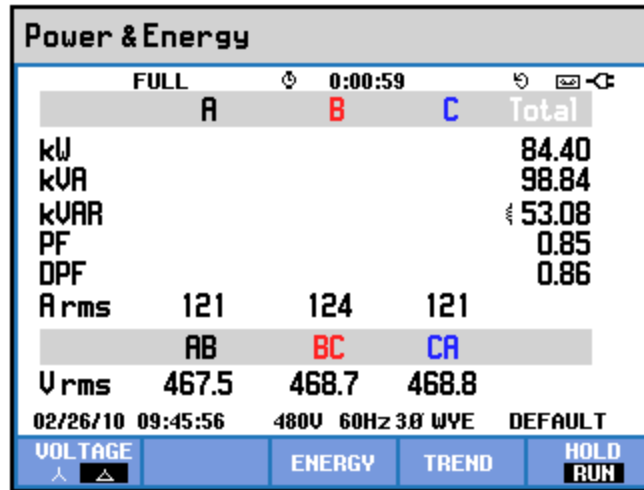
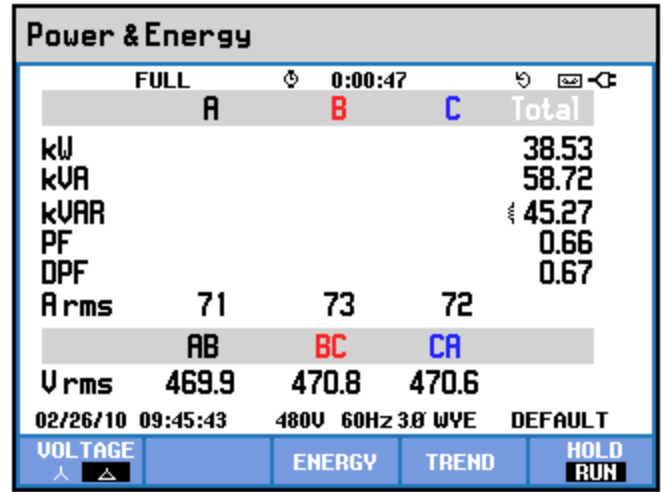
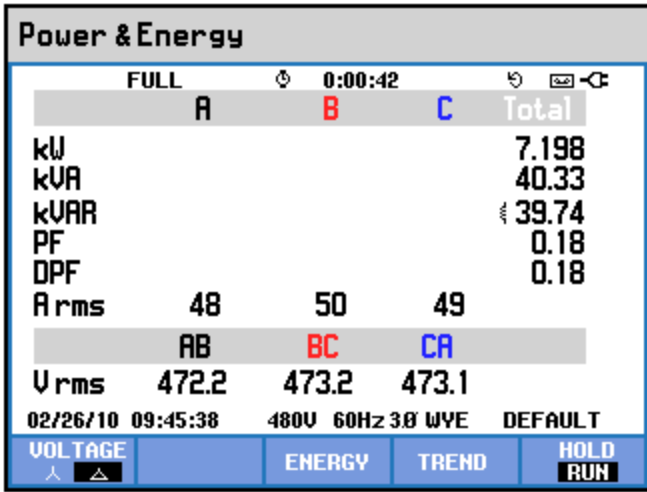
POWER FACTOR:



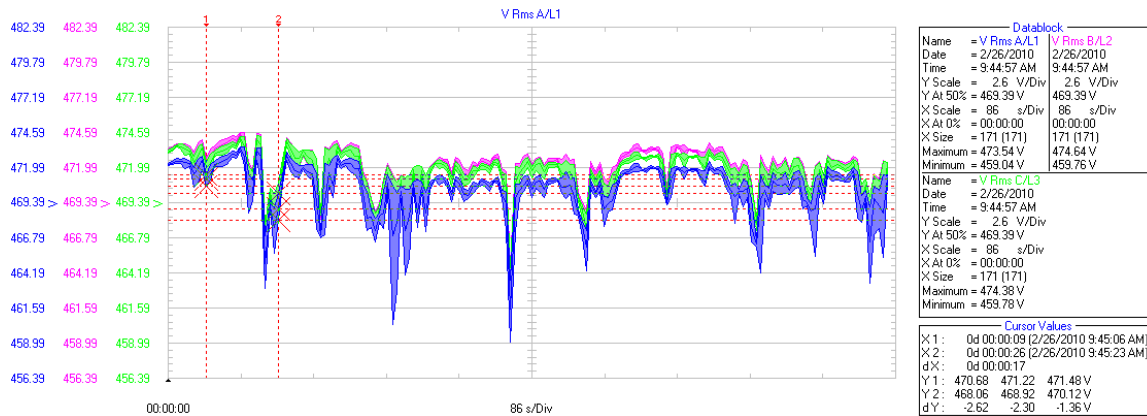
DISPLACEMENT POWER FACTOR:



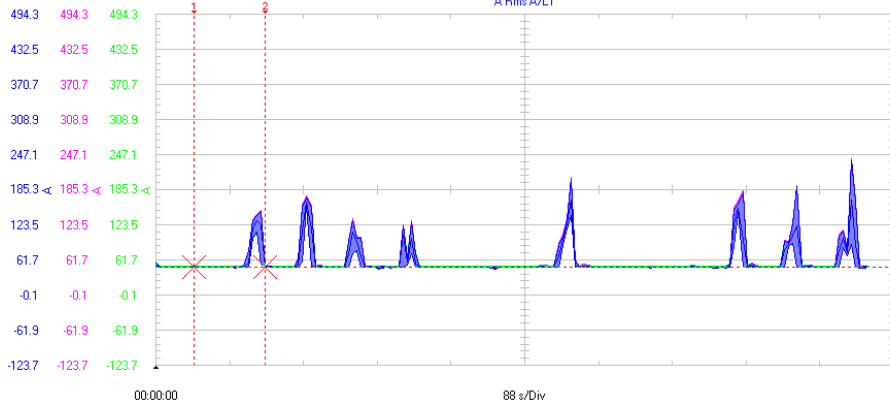
DELTA DATA:



VOLTAGE



CURRENT

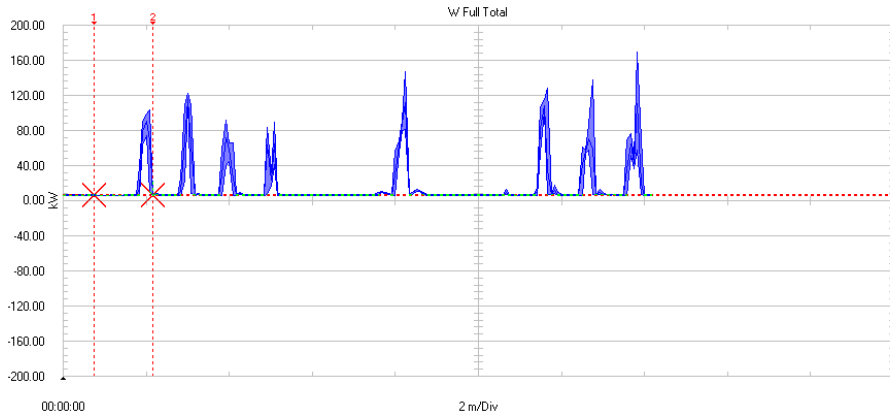


Datablock	
Name = A Rms A/L1	A Rms B/L2
Date = 2/26/2010	2/26/2010
Time = 9:44:57 AM	9:44:57 AM
Y Scale = 61.8 A/Div	61.8 A/Div
Y At 50% = 185.3 A	185.3 A
X Scale = 88 s/Div	88 s/Div
X At 0% = 00:00:00	00:00:00
X Size = 171 (171)	171 (171)
Maximum = 237.8 A	240.5 A
Minimum = 44.6 A	45.3 A

Datablock	
Name = A Rms C/L3	
Date = 2/26/2010	
Time = 9:44:57 AM	
Y Scale = 61.8 A/Div	
Y At 50% = 185.3 A	
X Scale = 88 s/Div	
X At 0% = 00:00:00	
X Size = 171 (171)	
Maximum = 235.0 A	
Minimum = 44.3 A	

Cursor Values	
X1:	0d 00:00:09 (2/26/2010 9:45:06 AM)
X2:	0d 00:00:26 (2/26/2010 9:45:23 AM)
dX:	0d 00:00:17
Y1:	47.6 47.8 47.9 A
Y2:	47.9 48.2 48.6 A
dY:	0.3 0.4 0.7 A

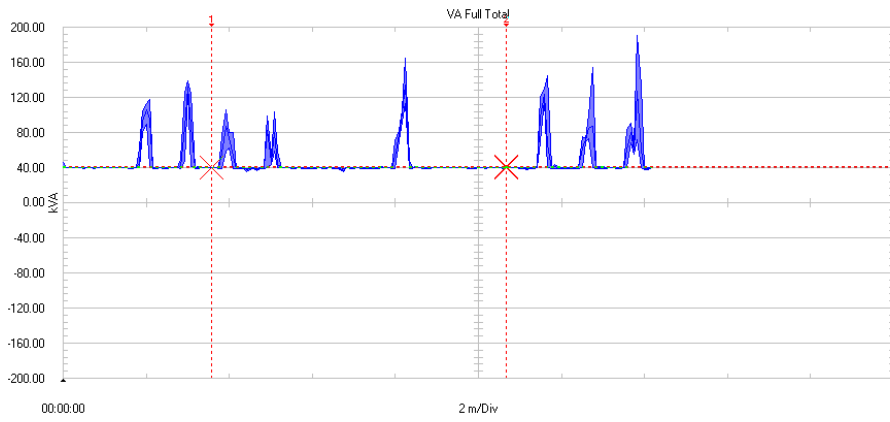
WATTS



Datablock	
Name = W Full Total	
Date = 2/26/2010	
Time = 9:44:57 AM	
Y Scale = 40 kW/Div	
Y At 50% = 0.00 kW	
X Scale = 2 m/Div	
X At 0% = 00:00:00	
X Size = 171 (171)	
Maximum = 163.43 kW	
Minimum = 6.01 kW	

Cursor Values	
X1:	0d 00:00:09 (2/26/2010 9:45:06 AM)
X2:	0d 00:00:26 (2/26/2010 9:45:23 AM)
dX:	0d 00:00:17
Y1:	6.77 6.89 7.12 kW
Y2:	6.81 7.25 7.87 kW
dY:	0.04 0.36 0.75 kW

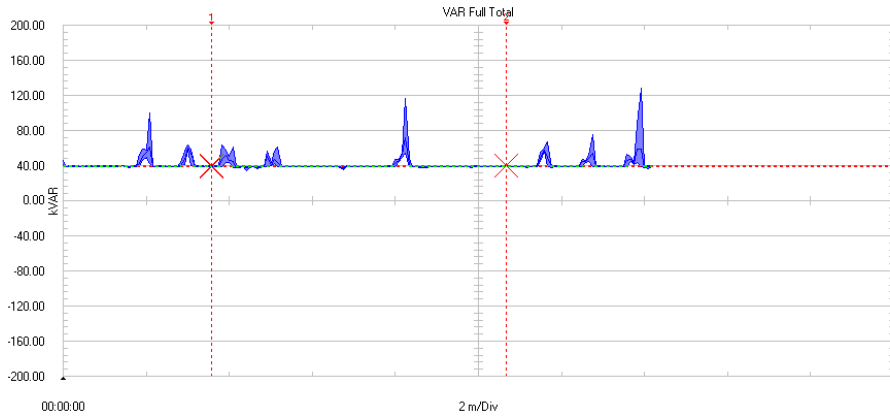
VA WATTS



Datablock	
Name = VA Full Total	
Date = 2/26/2010	
Time = 9:44:57 AM	
Y Scale = 40 kVA/Div	
Y At 50% = 0.00 kVA	
X Scale = 2 m/Div	
X At 0% = 00:00:00	
X Size = 171 (171)	
Maximum = 191.19 kVA	
Minimum = 35.76 kVA	

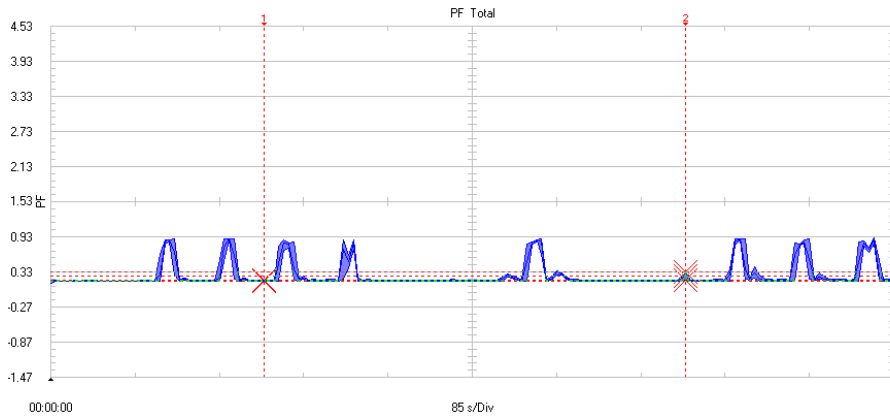
Cursor Values	
X1:	0d 00:00:43 (2/26/2010 9:45:40 AM)
X2:	0d 00:02:08 (2/26/2010 9:47:05 AM)
dX:	0d 00:01:25
Y1:	40.15 40.40 40.63 kVA
Y2:	40.64 41.33 42.24 kVA
dY:	0.49 0.93 1.61 kVA

VAR



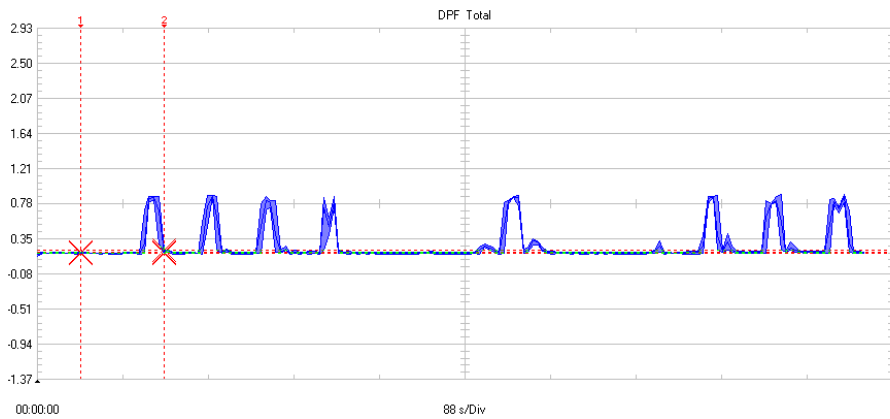
Datablock	
Name	= VAR Full Total
Date	= 2/26/2010
Time	= 9:44:57 AM
Y Scale	= 40 kVAR/Div
Y At 50%	= 0.00 kVAR
X Scale	= 2 m/Div
X At 0%	= 00:00:00
X Size	= 171 (171)
Maximum	= 129.12 kVAR
Minimum	= 35.17 kVAR
Cursor Values	
X1:	0d 00:00:43 (2/26/2010 9:45:40 AM)
X2:	0d 00:02:08 (2/26/2010 9:47:05 AM)
dX:	0d 00:01:25
Y1:	39.59 39.87 40.07 kVAR
Y2:	40.00 40.04 40.12 kVAR
dY:	0.41 0.17 0.05 kVAR

POWER FACTOR



Datablock	
Name	= PF Total
Date	= 2/26/2010
Time	= 9:44:57 AM
Y Scale	= 600 mPF/Div
Y At 50%	= 1.53 PF
X Scale	= 85 s/Div
X At 0%	= 00:00:00
X Size	= 171 (171)
Maximum	= 0.90 PF
Minimum	= 0.13 PF
Cursor Values	
X1:	0d 00:00:43 (2/26/2010 9:45:40 AM)
X2:	0d 00:02:08 (2/26/2010 9:47:05 AM)
dX:	0d 00:01:25
Y1:	0.16 0.17 0.18 PF
Y2:	0.18 0.25 0.32 PF
dY:	0.02 0.08 0.14 PF

DISPLACEMENT POWER FACTOR



Datablock	
Name	= DPF Total
Date	= 2/26/2010
Time	= 9:44:57 AM
Y Scale	= 0.43 /Div
Y At 50%	= 0.78
X Scale	= 88 s/Div
X At 0%	= 00:00:00
X Size	= 171 (171)
Maximum	= 0.90
Minimum	= 0.13
Cursor Values	
X1:	0d 00:00:09 (2/26/2010 9:45:06 AM)
X2:	0d 00:00:26 (2/26/2010 9:45:23 AM)
dX:	0d 00:00:17
Y1:	0.17 0.17 0.18
Y2:	0.17 0.18 0.20
dY:	0.00 0.01 0.02